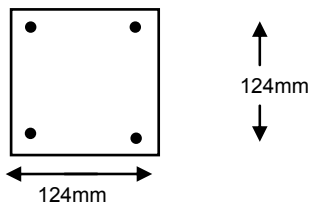


Specifications and Dimensions:

Retracted Height (A)	3000 mm
Extended Height	8000 mm
Dimension (B)	4000 mm
Dimension (C)	195 mm
Top Tube Diameter	89 mm
Base Diameter (D)	150 mm x 150mm
Number of Sections	4
13-Core Internal Cable	
Maximum Recommended Headload: 80 Kg	

TOP Flange :

4 x m8 bracket mounting studs



Materials:

Mast Sections: Heat treated aluminium alloy 6082 T6.

Castings: Die cast aluminium alloy LM6.
Mast Base: 4mm Steel Galvanized

Finishes:

Mast base colours: Dark green or black

Mast sections: Green anodised.

Fittings: Zinc plated and passivated.

Operating Temperatures: +55 C to -40 C (dry).

Maximum Working Air Pressure: 25 psi.

